

JetStor[®]

Storage. Solutions. Support.

JetStor JX JBOD Series Quick Installation Guide

Thank you for purchasing a JetStor JBOD storage system.

This QIG will get you up and running quickly and is applicable to the following models:

824JX, 824JXD, 816JX, 816JXD, 812JX, 812JXD, 826JXD.

1 BEFORE YOU BEGIN

Package Contents

A JetStor JX JBOD model includes:

- System chassis (x1)
- Disk drive trays: (x24 LFF1) for 4U 24-bay; (x16 LFF) for 3U 16-bay; (x12 LFF) for 2U 12-bay; (x26 SFF2) for 2U 26-bay
- AC power cords (x2)
- SAS 12G expansion cable (x2) for dual controller model; (x1) for single controller model
- RS-232 console cable (x2) for dual controller model; (x1) for single controller model
- Screws pack for disk drives
- This quick installation guide

Optional accessories:

- Rail kit (model name: SLR-RM3640)
- SAS 12G expansion cable with Wake-on-SAS (model name: CBL-12SW150)

More Information

For additional hardware manual, software manual, or compatibility matrix which includes HDD, SSD, and HBA requirements, please refer to the JetStor download center at <http://www.acnc.com/support>

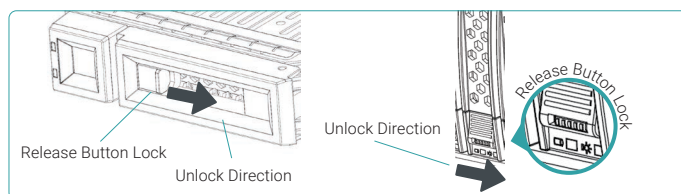
¹ LFF : Large Form Factor / 3.5" disk drive

² SFF : Small Form Factor / 2.5" disk drive

2 INSTALL THE DISK DRIVES

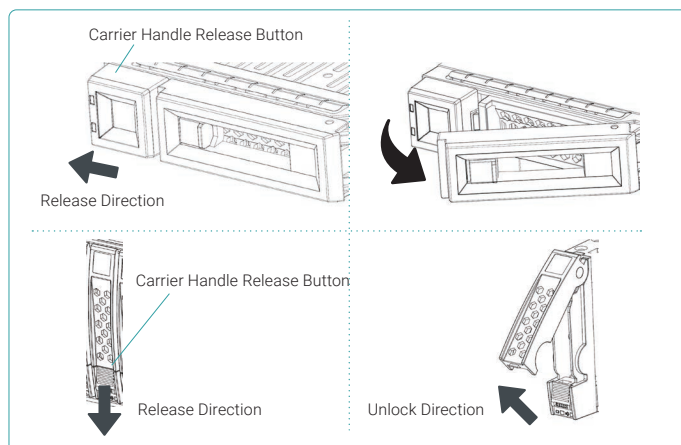
Unlock the Disk Drive Tray

- The standard position of the disk drive tray is locked to prevent damage during transport.
- To unlock LFF or SFF disk drive tray: shift the release button lock from left to right.



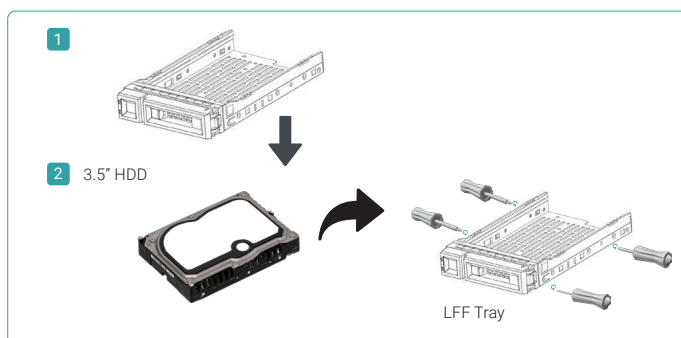
Open the Carrier Handle of a Disk Drive Tray

- The procedure of opening an LFF disk drive tray carrier handle: shift the carrier handle release button from right to left; then carrier handle will automatically pop out.
- Open an SFF disk drive tray carrier handle: shift the carrier handle release button from up to down; then carrier handle will automatically pop out.



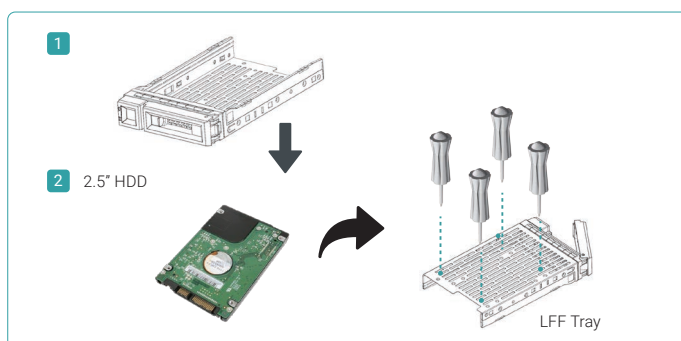
Install an LFF Disk Drive into an LFF Tray

1. Place a disk drive tray onto a stable surface.
2. Align the disk drive to the tray (with disk connector facing away from carrier handle) and align the four disk drive tray screw holes located on both sides of the hard drive.
3. Install and tighten all four screws to secure the disk drive within the tray.



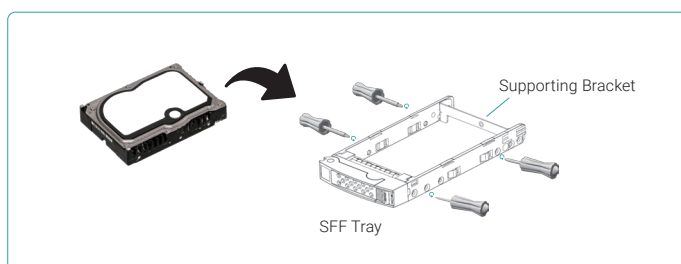
Install an SFF Disk Drive into an LFF Tray

1. Place a disk drive tray onto a stable surface.
2. Align the disk drive to the tray with the connector facing away from the carrier handle.
3. Align the four disk drive tray screw holes (front row at the bottom side of the tray for SAS interface disk drive; a rear row for SATA interface SSD) to the disk drive.
4. Install and tighten all four screws to secure disk drive.



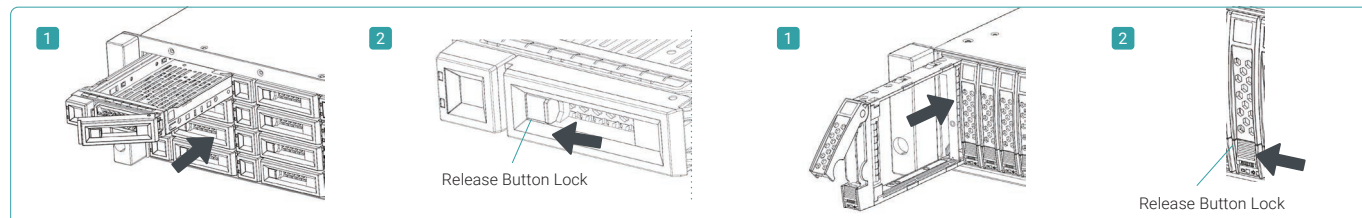
Install an SFF Disk Drive into an SFF Tray

1. Place a disk drive tray onto a stable surface.
2. Remove the supporting bracket. Then align the disk drive with the connector facing away from the carrier handle.
3. Align the four disk drive tray screw holes on both sides of the disk tray.
4. Install and tighten all four screws to secure disk drive within the tray.



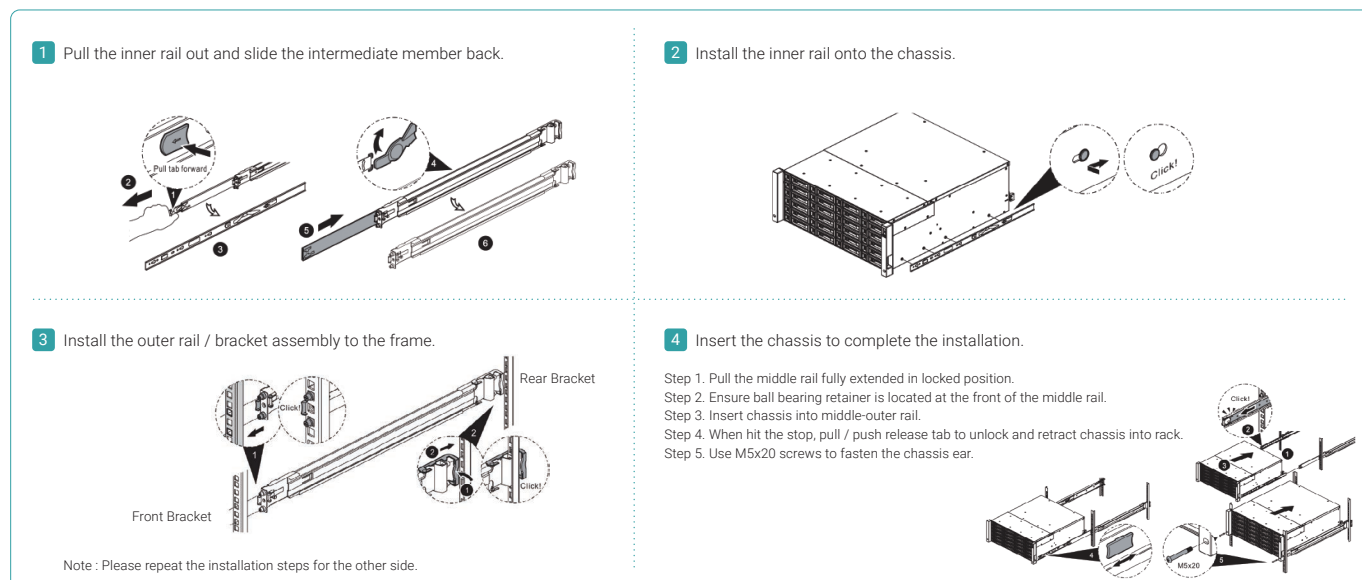
Install the Tray with the Disk Drive into the System Chassis

- Users must open the carrier handle of a drive tray before installing it into the empty bay of the system chassis.
- The following is the procedure for installing a disk drive with the tray into the system for both LFF and SFF disk drive trays:
 1. Align a disk drive with the tray to the empty bay you would like to install and then push it all the way into the disk drive bay until the carrier handle can be closed.
 2. Lock the release button lock by pushing the lock from right to left.
- Refer to the label on the system chassis for disk drive numbering. The disk drive numbering for 2U 26-bay system will be printed on the chassis.



3 INSTALL THE OPTIONAL RAIL KIT

The rail kit is an optional accessory for JetStor JX JBOD series product. If you have ordered the rail kit, Please follow the racking instructions below.



CAUTION:
The populated JetStor JX JBOD system can be very heavy, to avoid any potential injury or harm to installers, or damage to the system, we strongly recommend at least two certified operators or engineers perform the system installation.

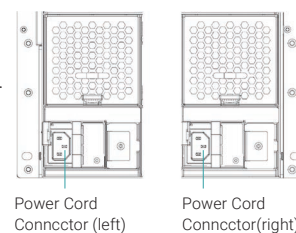
4 POWER ON THE STORAGE SYSTEM

Connect the Power Cables

1. Connect power cables from each power supply module to a power source.
2. Make sure to secure the power cables to the power supply modules so they cannot be pulled out accidentally.

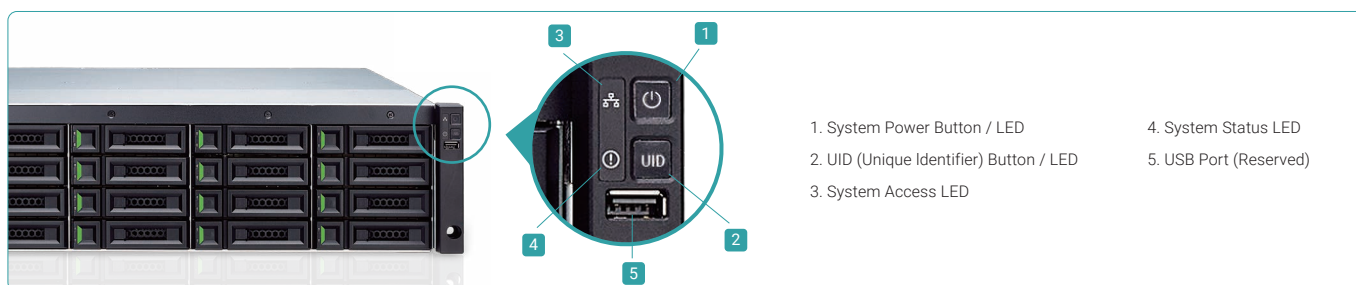
Power on the System Components

1. Power on the JX JBOD system by pressing the power button on the front of the system.



TIP:
Please wait for the controller status LED to turn green on the rear of the chassis before attempting to discover or manage the storage system. It may take a few seconds to boot the JX JBOD system.

2. See the diagram below to determine the meaning of the lights and indicators on the front of the system.



5 DISCOVER AND MONITOR THE SYSTEM

Discover the System

After powering on the system, the next step is to discover the system on the host. If the JX JBOD series is connected as a server storage expansion, please refer to the user guide of the HBA or RAID card on server. If the X JBOD series is connected as the expansion unit of the JetStor JX series, please refer to the JetStor JX Series User's Software Manual which can be downloaded from the JetStor website: <http://kb.acnc.com/wp-content/uploads/2017/04/JetStor-FX-Series-Software-Manual-v1.0.pdf>

Monitor the System

To monitor the system, we provide a CubeView utility which is a central management software with graphic user interface to monitor the JX JBOD series system. For more information, please refer to the JX JBOD CubeView User's Manual which can be downloaded from the JetStor website.

In addition, we also provide CLI (Command Line Interface) to manage command line interface. For more information, please refer to the JX JBOD CLI User's Manual which can be downloaded from the JetStor website.

6 GETTING TECHNICAL SUPPORT

Please follow the troubleshooting tips in the JX JBOD series Hardware Owner's Manual to diagnose and resolve common problems during initial setup and configuration. If you are still encountering trouble, please contact JetStor technical support for help using one of the options below.

- Via the Web: <http://www.acnc.com/support>
- Via Telephone: 800.213.2667
- Via Skype Chat, Skype ID: jetstor.support
- Via Email: support@acnc.com

JetStor[®]
Storage. Solutions. Support.